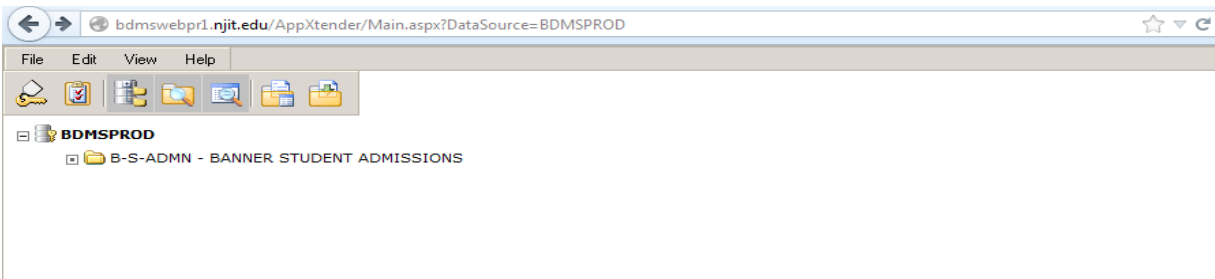
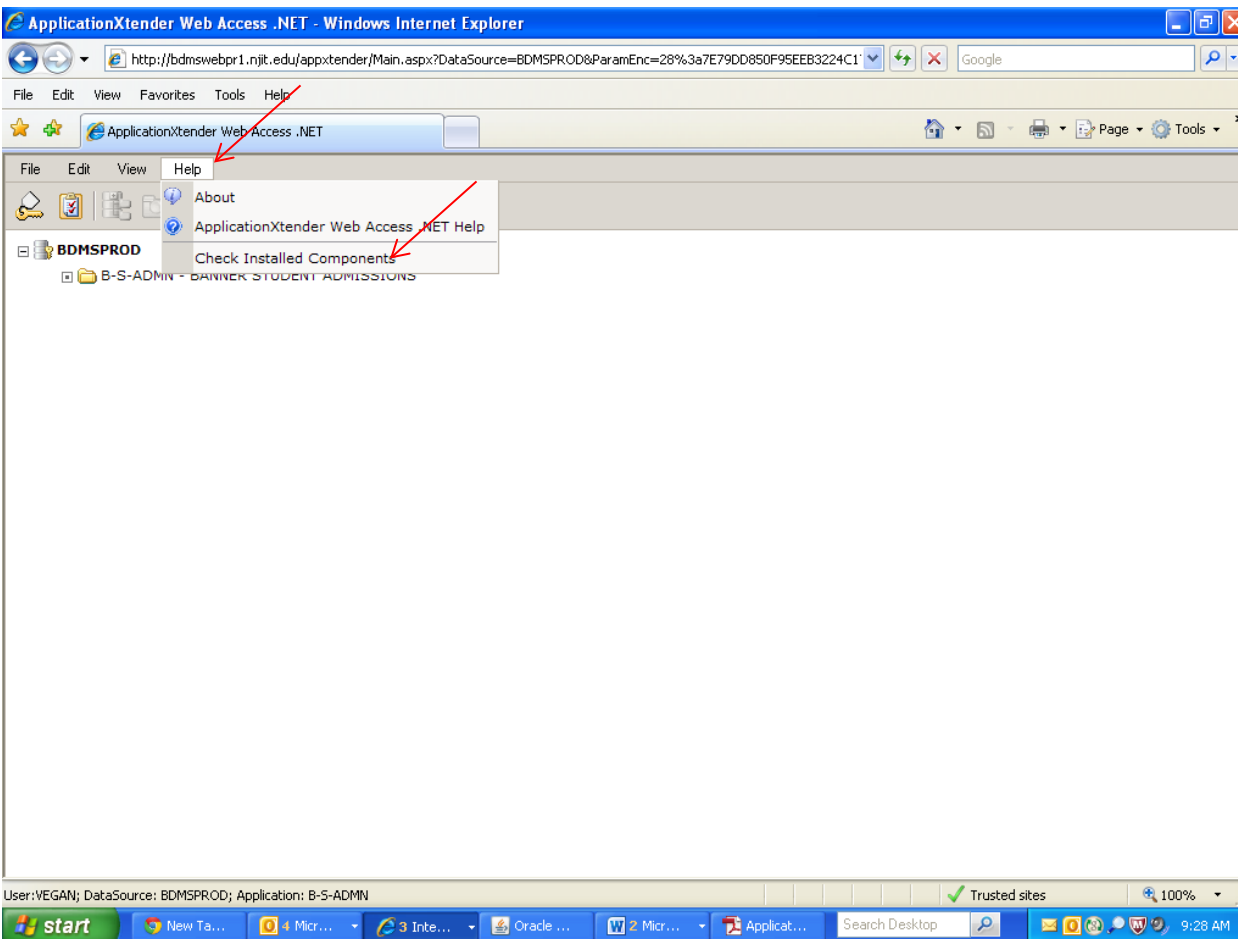


## To install Adobe Component for ApplicatonXtender

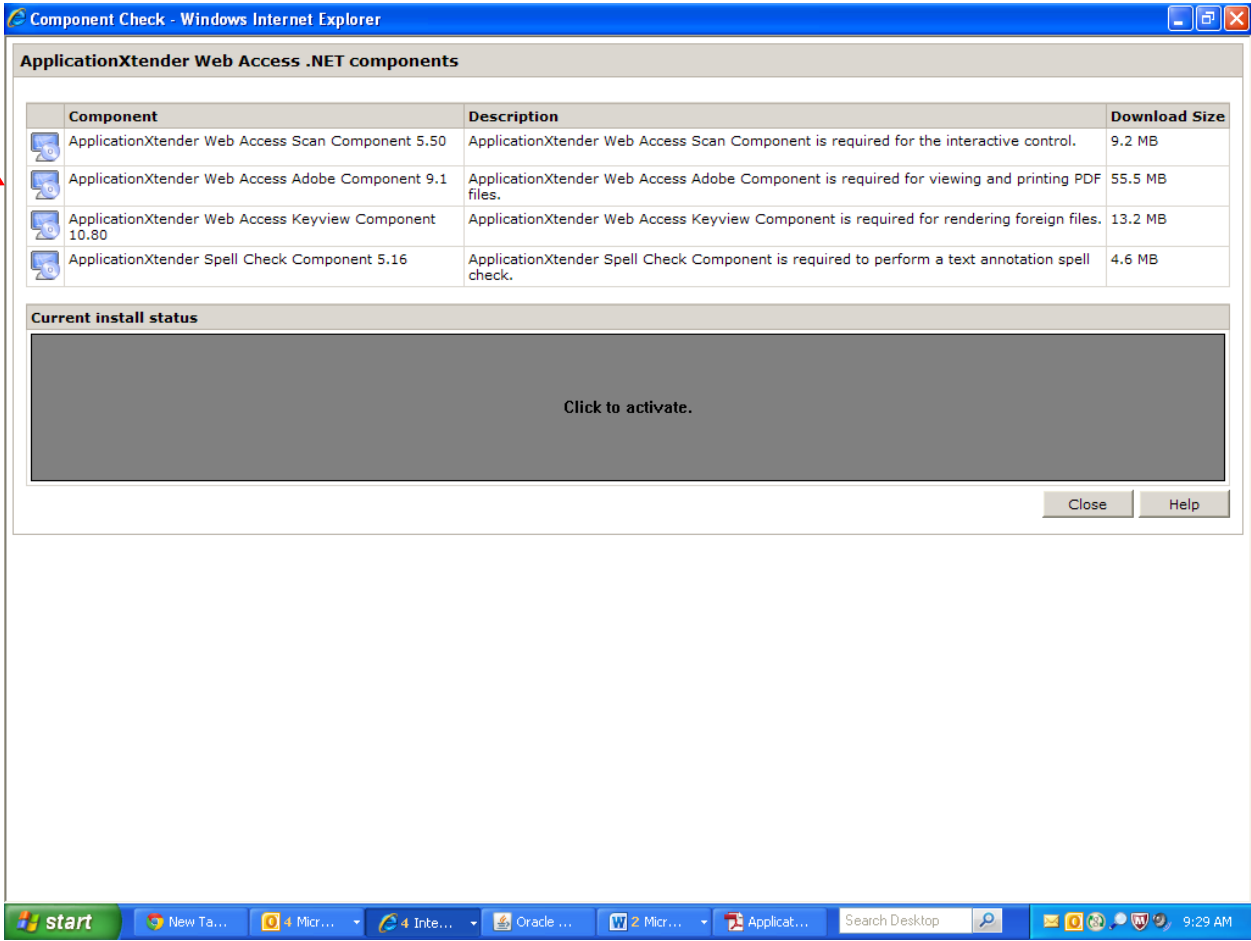
1. After logging in using **Internet Explorer**, you should see the page below.



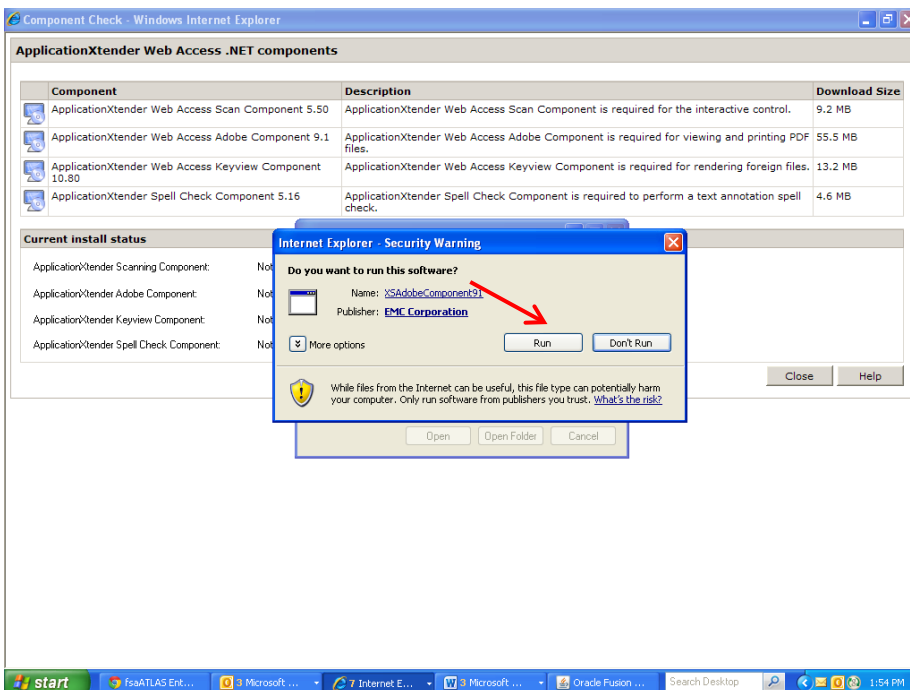
2. Go to Help and Check Installed Components.



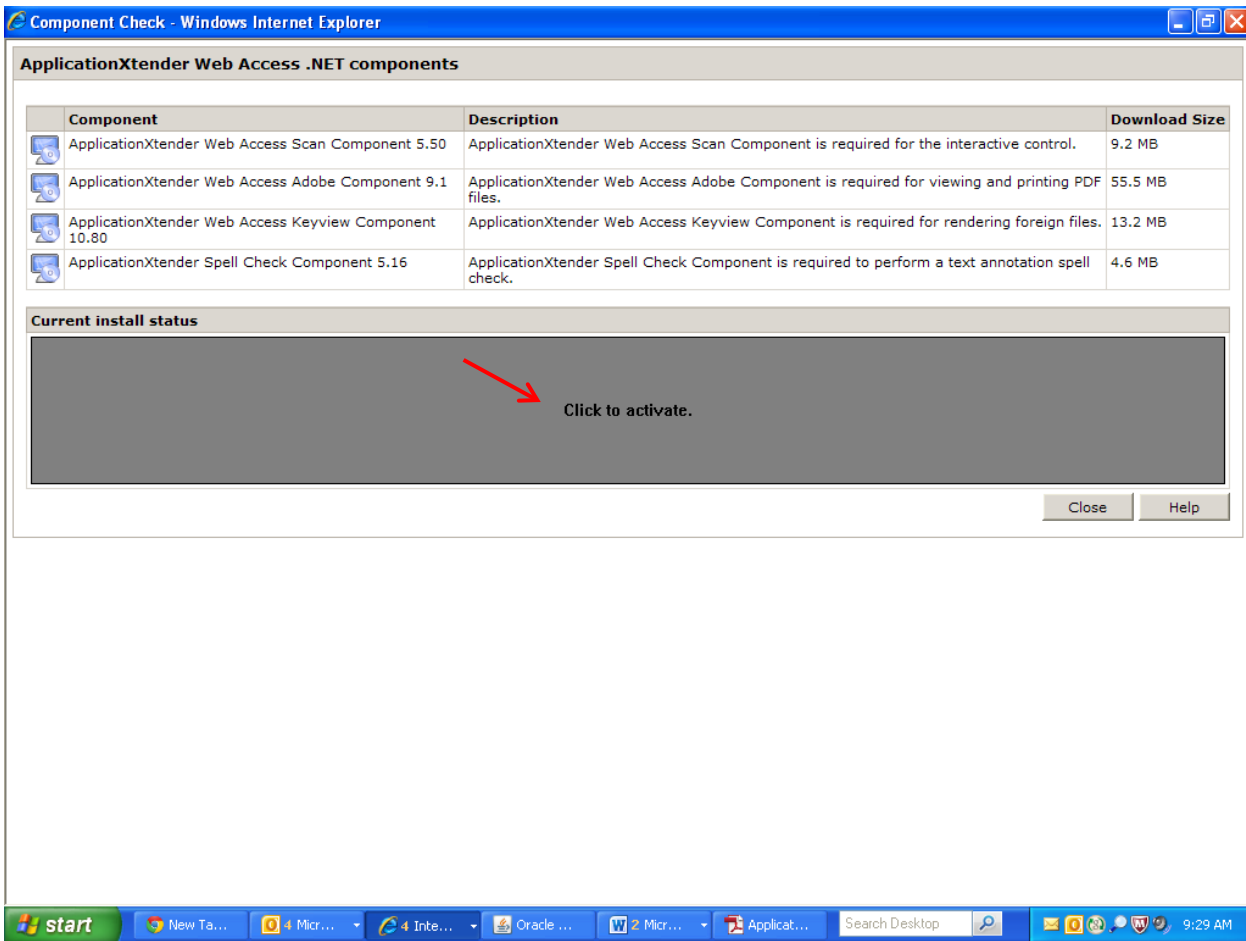
3. Click on the second component CD icon ApplicationXtender Web Access Adobe Component 9.1 and follow prompts to Run.



4. If EMC prompt comes up click Run.



5. To check if it has been properly installed, close the window and return to the same page. Click on the Click to activate.



6. The component will now appear as installed.

