



Embedding Media in your Course

Embedding media in your course can help enhance student learning. Add a piece of media to your forums, assignments and quizzes. You can even embed them, traditionally, as mini-lectures and learning objects.

- 1) Go to moodle.njit.edu.
- 2) Select a course you would like to add media to.

- 3) Click the “Turn editing on” button. 

- 4) In the section you would like to add media to, click the “Add an activity or resource” link. 

- 5) Select an activity or resource (i.e. Forum, Assignment, Page) to add the media to (see Image 1: For this example, a Moodle “Page” was used).



Image 1: Adding an activity or resource.

- 6) In the Moodle TinyMCE Text Editor, click on the “Kaltura Embed Media” icon (see Image 2).

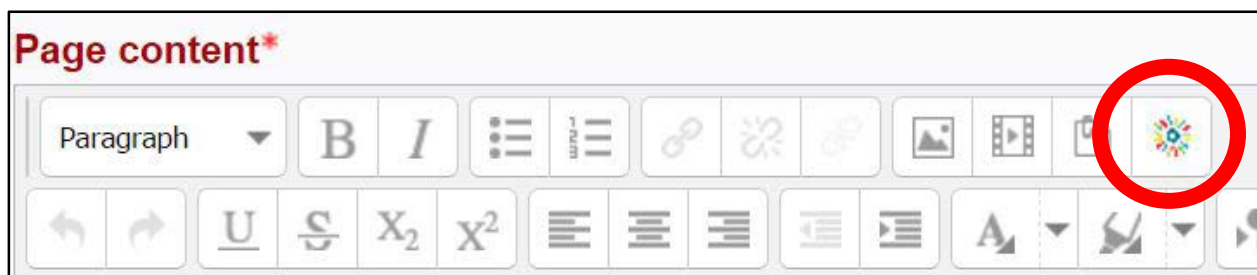



Image 2:

- 7) Your media will be listed, click the “Select” button, to the right of a media item to use it in your course. By default, the media is set to small. 

- a. Use the arrow for the dropdown menu to pick a video size (see Image 3).

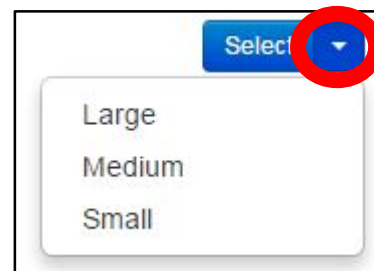


Image 3: Arrow for video size selection.

Embedding Media in your Course

- 8) Click the indiscernible “Embed media” button, outlined in green, which will be on the bottom left side of the small window (see image 4).



Image 4: “Embed media” button.

- 9) The embedding video will appear as a link in the field of

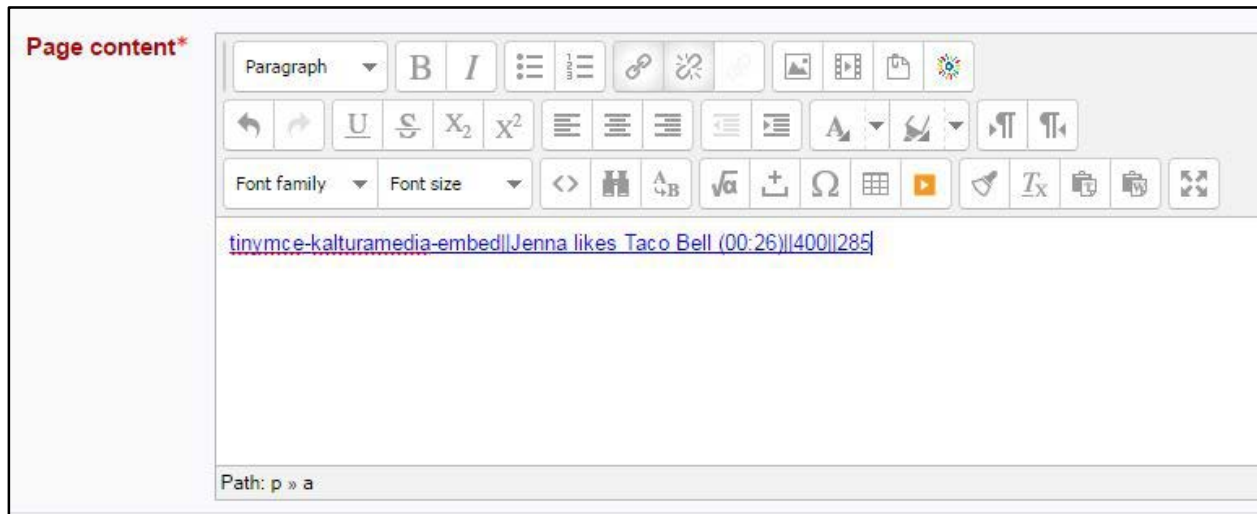
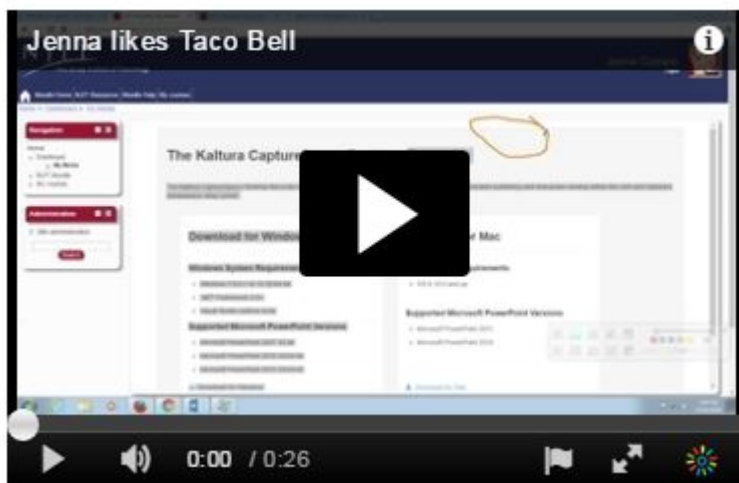


Image 5:

- 10) Click the “Save and display” button.



- 11) Your media item will show up embedded (see Image 6).



Embedding Media in your Course

Questions?

If you are still in need of assistance, do not hesitate to contact the Help Desk.

You can reach the Help Desk from Monday to Friday 8am to 7pm.

Phone: (973)-596-2900

Location: Student Mall Room 48

Request Help Online: <http://ist.njit.edu/support/contactus.php>